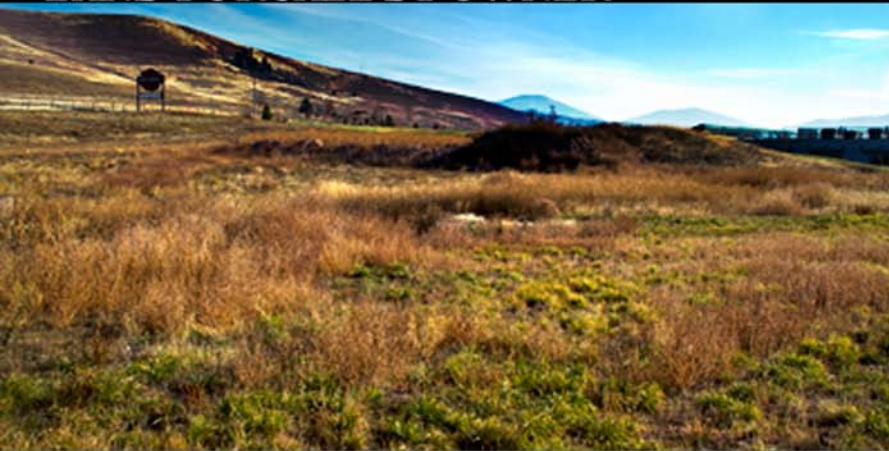




LAND FOR SALE BY OWNER



- 3.3 Acres of Undeveloped Land
- Commercial Property
- Great Interstate Access
- Off I-90 and Airway Blvd.
- Less than one mile from the Missoula International Airport
- Priced \$300,000 below current value as determined by the sell price of land held by the County of Missoula

LEGAL DESCRIPTION: MISSOULA DEVELOPMENT PARK, PHASE II, S01,T13 N, R20 W, BLOCK 009, LOT 010, LOT 10 BLK 9 OF MISSOULA DEVELOPMENT PARK PHASE 5A. 04-2199-01-1-02-29-0000

Direct all inquiries to CJ or Larry
at 406-721-2154 or 800-431-2453